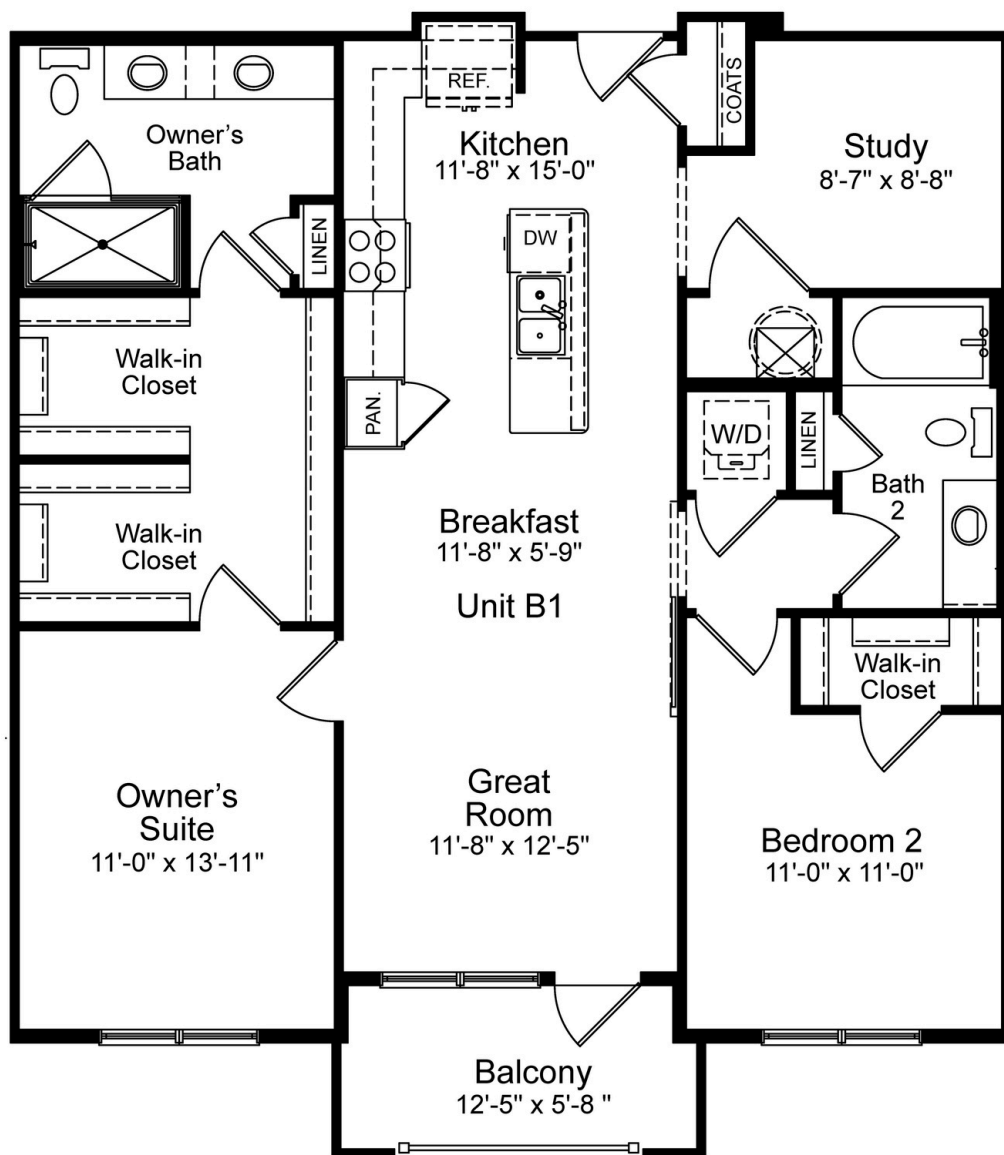


**"B1" FLOORPLAN**



**PLAN LOCATION**

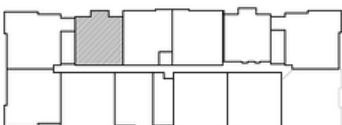
**BUILDING A**



**BUILDING B**



**BUILDING C**



**1,210 SQ. FT.**  
**2 BED | 2 BATHS**

**CONTACT US**

**SALES & DESIGN CENTER**  
74 OLD MILL BOTTOM RD N  
ANNAPOLIS, MD 21409

**E-mail:** info@elementatmillcreek.com

**Phone:** 703.402.0300

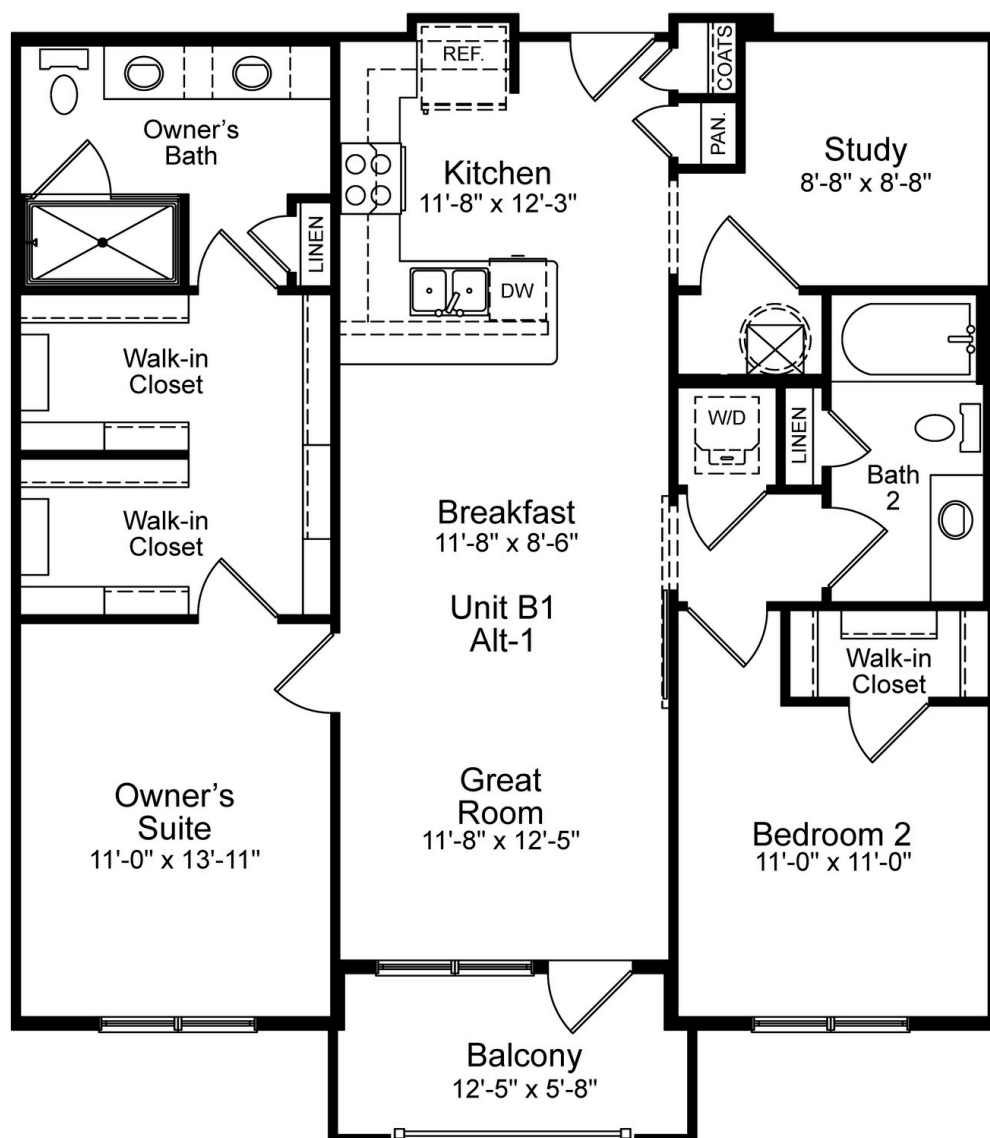


**McWilliams**  
**Ballard**

[WWW.ELEMENTATMILLCREEK.COM](http://WWW.ELEMENTATMILLCREEK.COM)

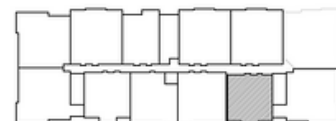


**"B1 - ALT 1" FLOORPLAN**



**PLAN LOCATION**

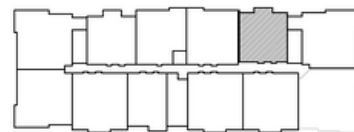
**BUILDING A**



**BUILDING B**



**BUILDING C**



**1,210 SQ. FT.**  
**2 BED | 2 BATHS**

**CONTACT US**

**SALES & DESIGN CENTER**  
74 OLD MILL BOTTOM RD N  
ANNAPOLIS, MD 21409

**E-mail:** info@elementatmillcreek.com

**Phone:** 703.402.0300



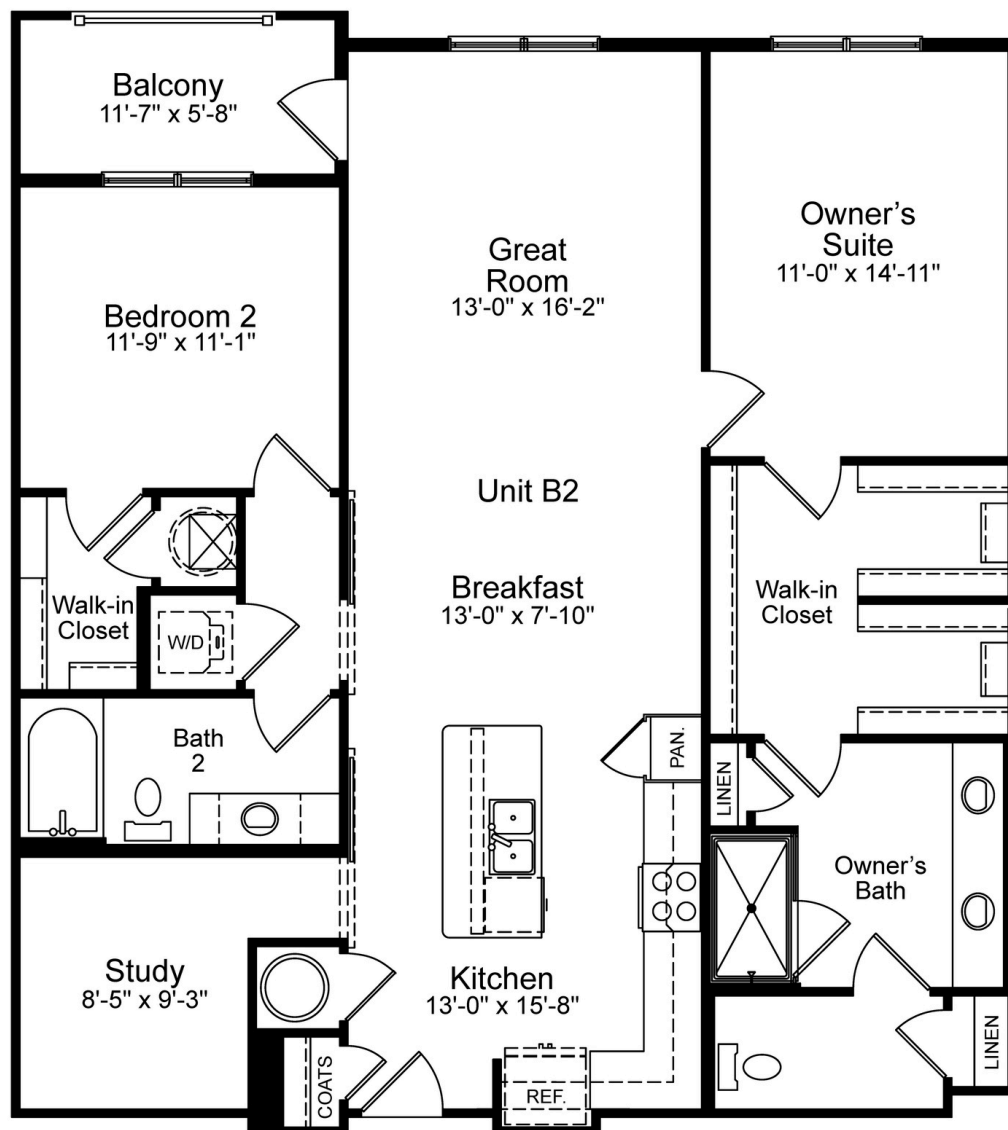
**McWilliams**  
**Ballard**



[WWW.ELEMENTATMILLCREEK.COM](http://WWW.ELEMENTATMILLCREEK.COM)

\*Community information, plans, pricing and amenity details and dimensions are approximate and subject to change. Illustrations are artist concepts and may vary from the actual product being built. Builder specifications are subject to revision or substitution of equivalent materials without notice. We reserve the right to substitute equipment, material, appliances, and brand names with items of equal or higher, in our sole opinion, value. Contact the community manager for the latest information. Maryland Home Builder Registration No. Christopher Management, Inc #9101, Christopher at Element at Mill Creek LLC #9169.

**"B2" FLOORPLAN**



**1,416 SQ. FT.**  
**2 BED | 2 BATHS**

**PLAN LOCATION**

**BUILDING A**



**BUILDING B**



**BUILDING C**



**CONTACT US**

**SALES & DESIGN CENTER**  
74 OLD MILL BOTTOM RD N  
ANNAPOLIS, MD 21409

**E-mail:** [info@elementatmillcreek.com](mailto:info@elementatmillcreek.com)

**Phone:** 703.402.0300

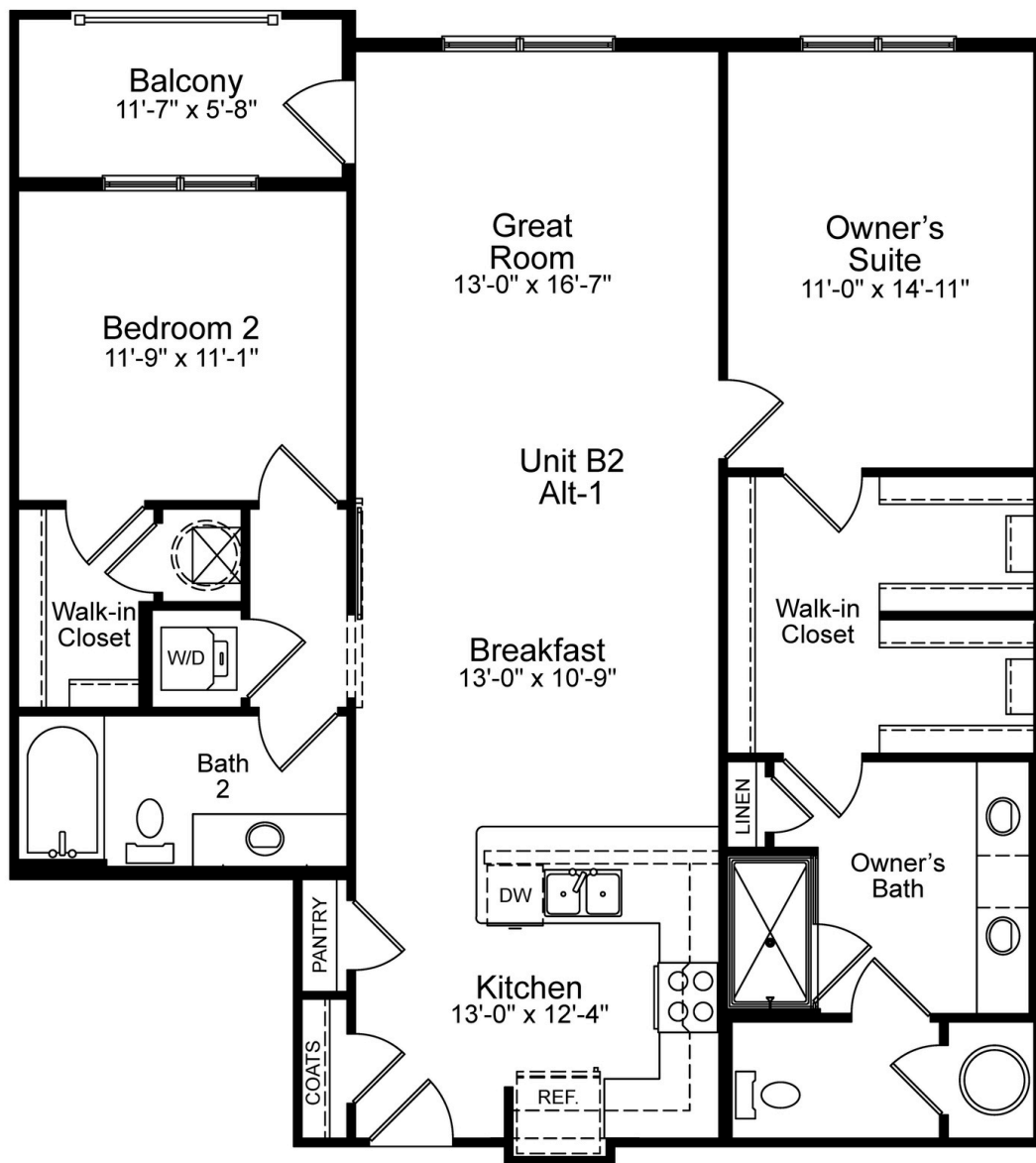


**McWilliams**  
**Ballard**

[WWW.ELEMENTATMILLCREEK.COM](http://WWW.ELEMENTATMILLCREEK.COM)



**"B2 - ALT 1" FLOORPLAN**



**1,318 SQ. FT.**  
**2 BED | 2 BATHS**

**PLAN LOCATION**

**BUILDING A**



**BUILDING B**



**BUILDING C**



**CONTACT US**

**SALES & DESIGN CENTER**  
74 OLD MILL BOTTOM RD N  
ANNAPOLIS, MD 21409

**E-mail:** [info@elementatmillcreek.com](mailto:info@elementatmillcreek.com)

**Phone:** 703.402.0300



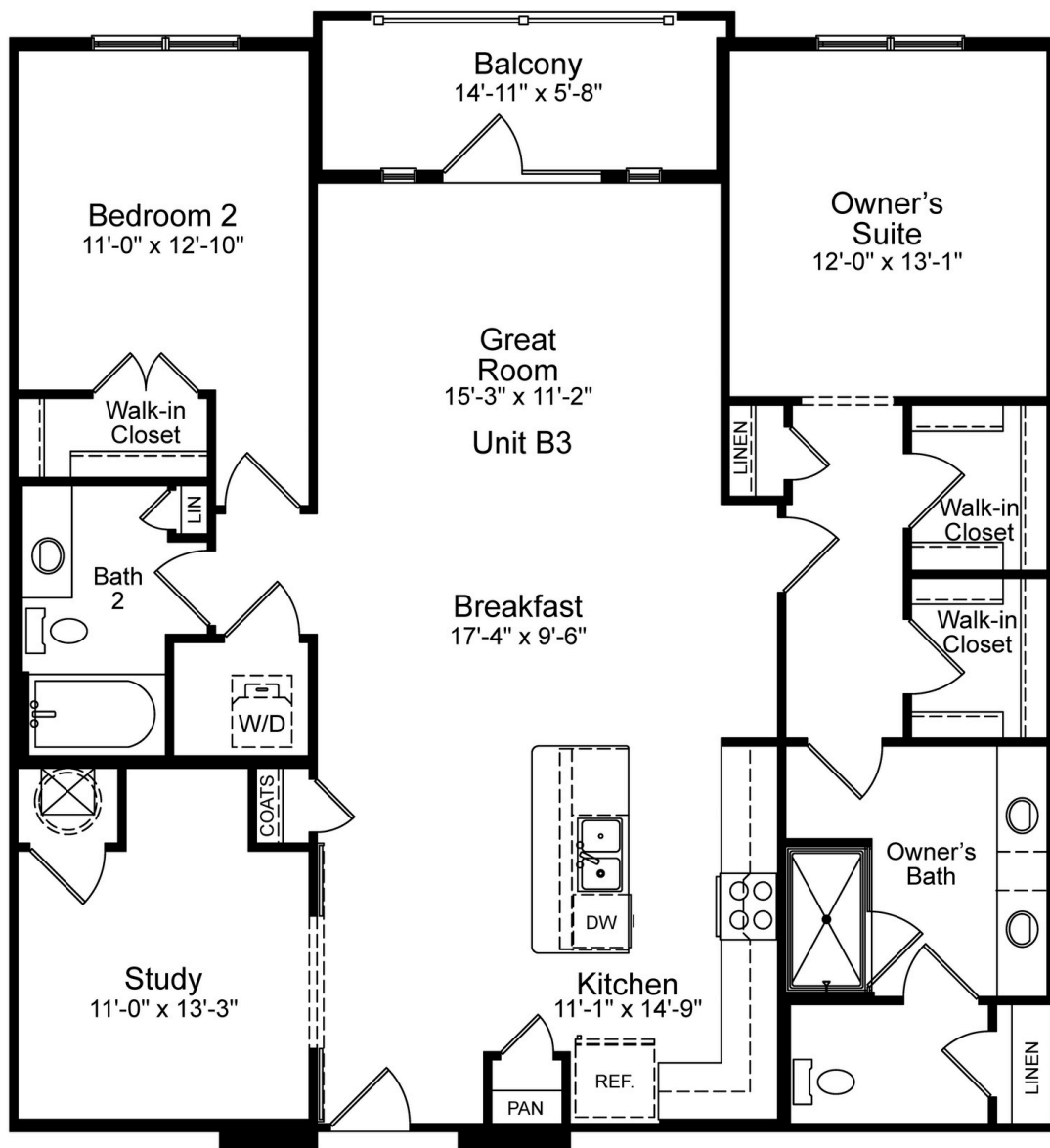
**McWilliams  
Ballard**

[WWW.ELEMENTATMILLCREEK.COM](http://WWW.ELEMENTATMILLCREEK.COM)





**"B3" FLOORPLAN**



**1,558 SQ. FT.**  
**2 BED | 2 BATHS**

**PLAN LOCATION**

**BUILDING A**



**BUILDING B**



**BUILDING C**



**CONTACT US**

**SALES & DESIGN CENTER**  
74 OLD MILL BOTTOM RD N  
ANNAPOLIS, MD 21409

**E-mail:** info@elementatmillcreek.com

**Phone:** 703.402.0300



[WWW.ELEMENTATMILLCREEK.COM](http://WWW.ELEMENTATMILLCREEK.COM)

\*Community information, plans, pricing and amenity details and dimensions are approximate and subject to change. Illustrations are artist concepts and may vary from the actual product being built. Builder specifications are subject to revision or substitution of equivalent materials without notice. We reserve the right to substitute equipment, material, appliances, and brand names with items of equal or higher, in our sole opinion, value. Contact the community manager for the latest information. Maryland Home Builder Registration No. Christopher Management, Inc #9101, Christopher at Element at Mill Creek LLC #9169.



**Unit B4**

**Great Room**  
15'-1" x 17'-11"

**Balcony**  
9'-2" x 5'-8"

**Breakfast**  
9'-7" x 13'-6"

**Kitchen**  
18'-11" x 10'-7"

**Bedroom 2**  
11'-3" x 12'-7"

**Bath 2**

**Owner's Suite**  
16'-3" x 12'-8"

**Owner's Bath**

**Study**

**Walk-in Closet**

**W/D**

**CLOSET**

**REF.**

**PANTRY**

**DW**

**COATS**

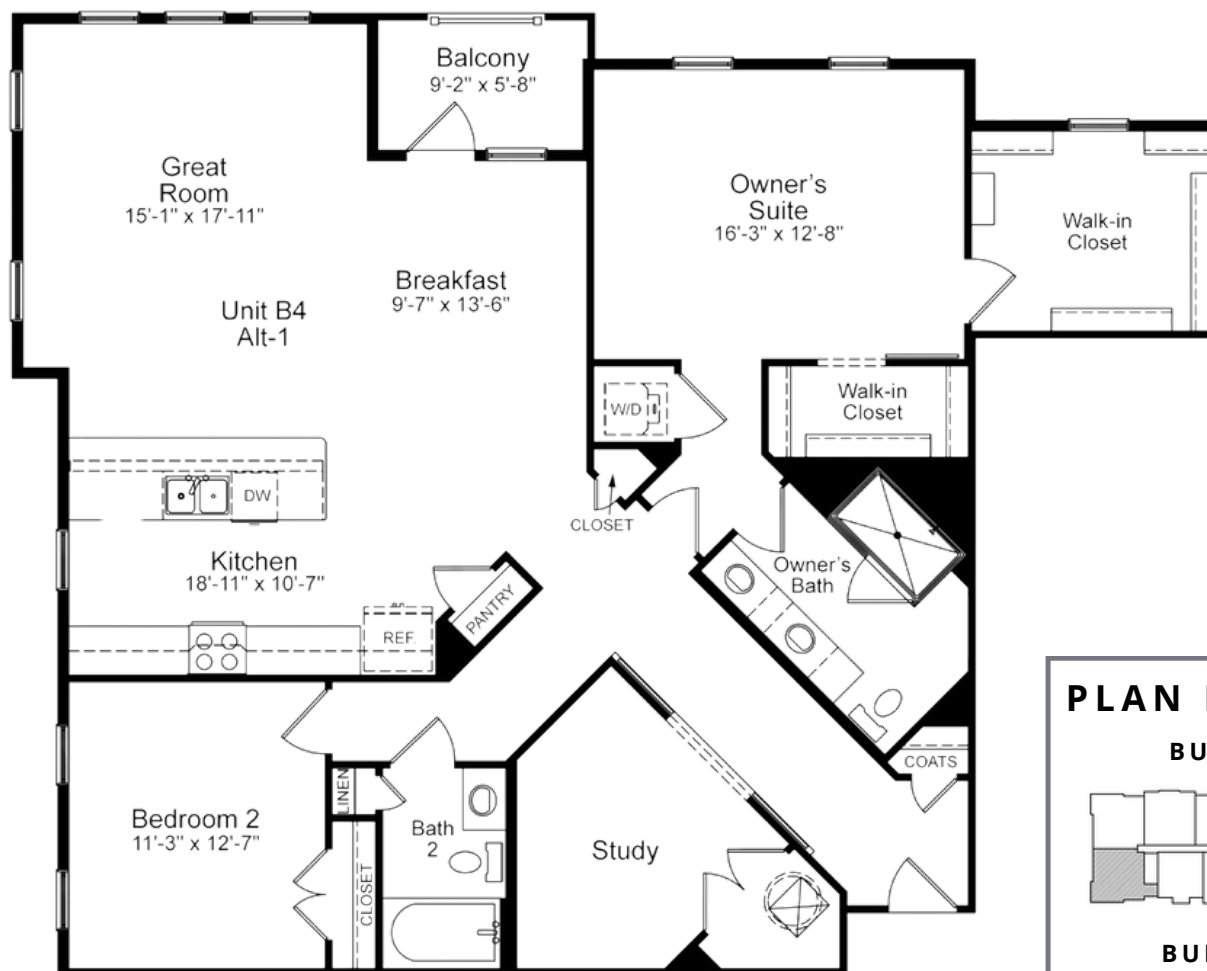
**LINEIN**

**CLOSET**

1,621 SQ. FT.  
2 BED | 2 BATHS

\*Community information, plans, pricing and amenity details and dimensions are approximate and subject to change. Illustrations are artist concepts and may vary from the actual product being built. Builder specifications are subject to revision or substitution of equivalent materials without notice. We reserve the right to substitute equipment, material, appliances, and brand names with items of equal or higher, in our sole opinion, value. Contact the community manager for the latest information. Maryland Home Builder Registration No. Christopher Management, Inc #9101. Christopher at Element at Mill Creek LLC #9169.

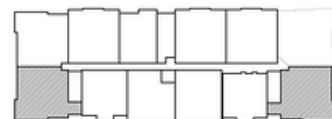
**"B4 - ALT 1" FLOORPLAN**



**1,723 SQ. FT.**  
**2 BED | 2 BATHS**

**PLAN LOCATION**

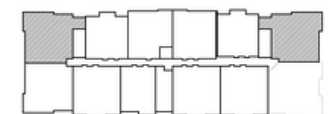
**BUILDING A**



**BUILDING B**



**BUILDING C**



**CONTACT US**

**SALES & DESIGN CENTER**  
74 OLD MILL BOTTOM RD N  
ANNAPOLIS, MD 21409

**E-mail:** [info@elementatmillcreek.com](mailto:info@elementatmillcreek.com)

**Phone:** 703.402.0300



**McWilliams  
Ballard**

[WWW.ELEMENTATMILLCREEK.COM](http://WWW.ELEMENTATMILLCREEK.COM)

