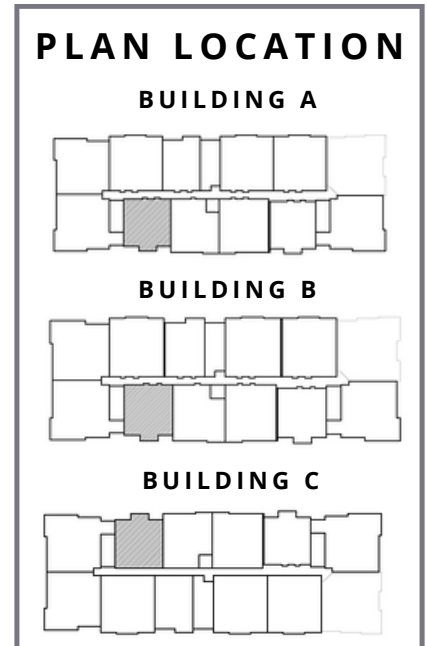
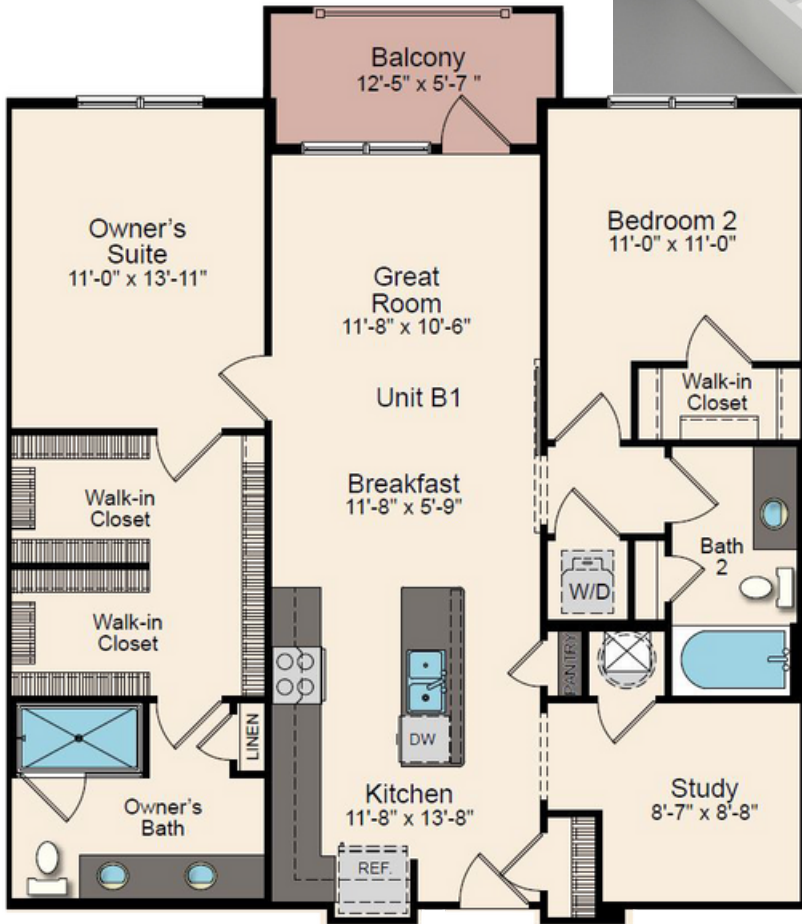


"B1" FLOORPLAN



1,210 SQ. FT.
2 BED | 2 BATHS

CONTACT US

SALES TRAILER LOCATION:
74 OLD MILL BOTTOM RD N
ANNAPOLIS, MD 21409

E-mail: info@elementatmillcreek.com

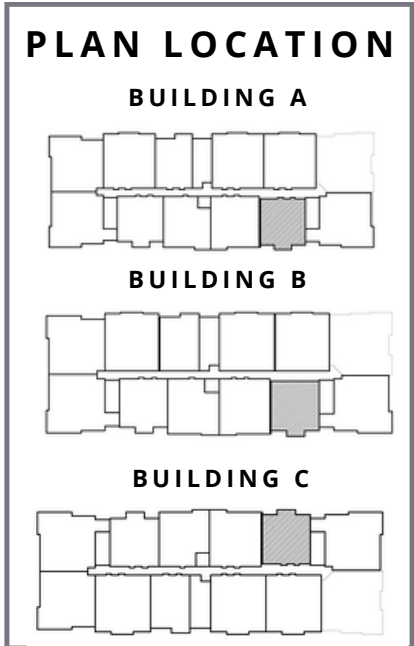
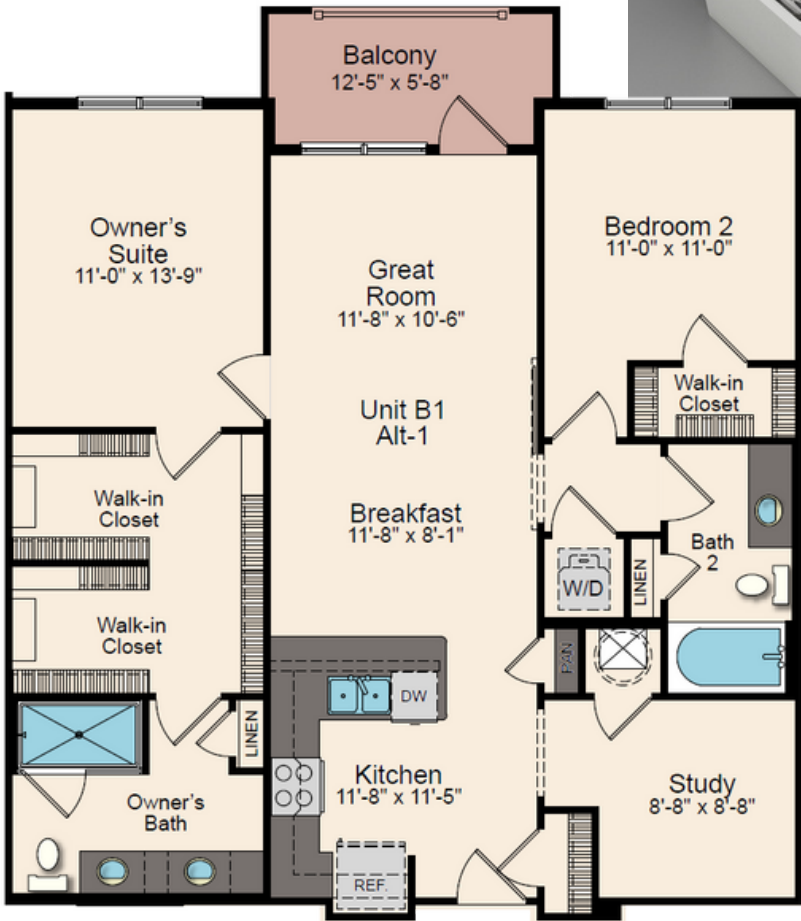
Phone: 703.402.0300



WWW.ELEMENTATMILLCREEK.COM



"B1 - ALT 1" FLOORPLAN



1,210 SQ. FT.
2 BED | 2 BATHS

CONTACT US

SALES TRAILER LOCATION:
74 OLD MILL BOTTOM RD N
ANNAPOLIS, MD 21409
E-mail: info@elementatmillcreek.com
Phone: 703.402.0300



WWW.ELEMENTATMILLCREEK.COM

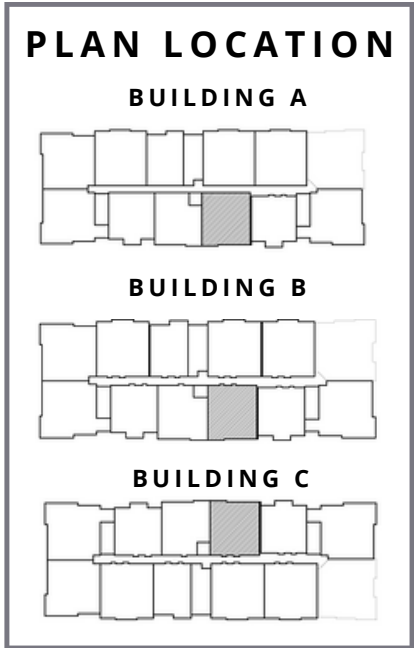
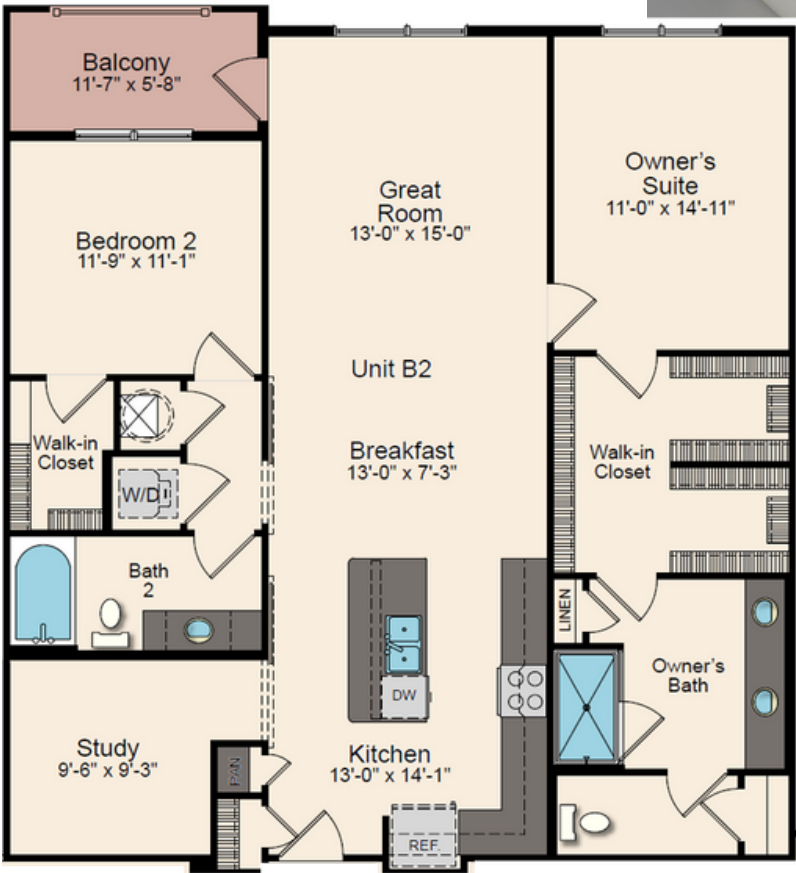


*Community information, plans, pricing and amenity details and dimensions are approximate and subject to change. Illustrations are artist concepts and may vary from the actual product being built. Builder specifications are subject to revision or substitution of equivalent materials without notice. We reserve the right to substitute equipment, material, appliances, and brand names with items of equal or higher, in our sole opinion, value. Contact the community manager for the latest information. Maryland Home Builder Registration No. Christopher Management, Inc #9101, Christopher at Element at Mill Creek LLC #9169.



ELEMENT AT MILL CREEK

"B2" FLOORPLAN



1,416 SQ. FT.
2 BED | 2 BATHS

CONTACT US

SALES TRAILER LOCATION:
74 OLD MILL BOTTOM RD N
ANNAPOLIS, MD 21409

E-mail: info@elementatmillcreek.com
Phone: 703.402.0300



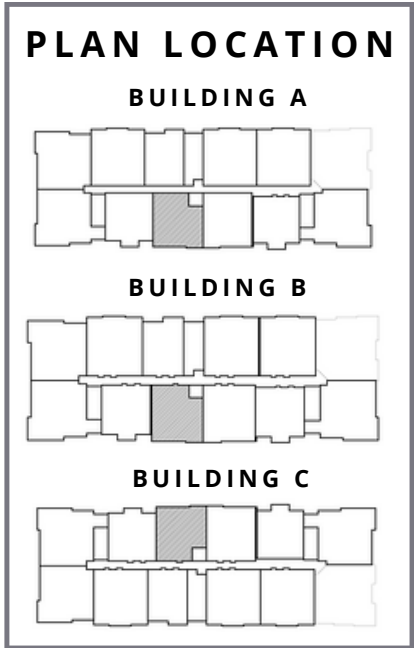
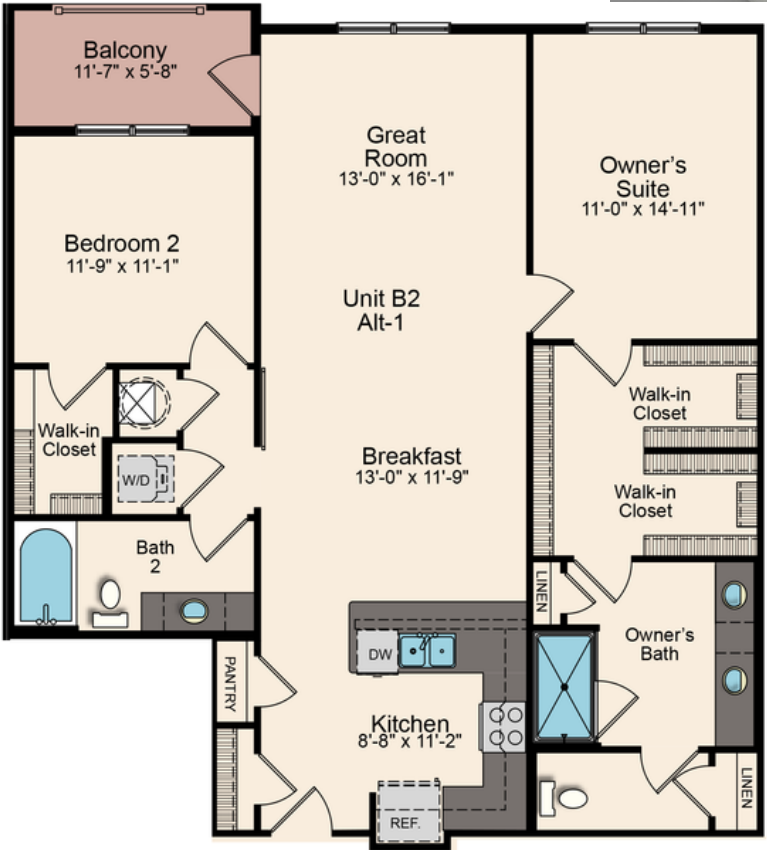
WWW.ELEMENTATMILLCREEK.COM

*Community information, plans, pricing and amenity details and dimensions are approximate and subject to change. Illustrations are artist concepts and may vary from the actual product being built. Builder specifications are subject to revision or substitution of equivalent materials without notice. We reserve the right to substitute equipment, material, appliances, and brand names with items of equal or higher, in our sole opinion, value. Contact the community manager for the latest information. Maryland Home Builder Registration No. Christopher Management, Inc #9101, Christopher at Element at Mill Creek LLC #9169.



ELEMENT AT MILL CREEK

"B2 - ALT 1" FLOORPLAN



1,318 SQ. FT.
2 BED | 2 BATHS

CONTACT US

SALES TRAILER LOCATION:
74 OLD MILL BOTTOM RD N
ANNAPOLIS, MD 21409

E-mail: info@elementatmillcreek.com
Phone: 703.402.0300

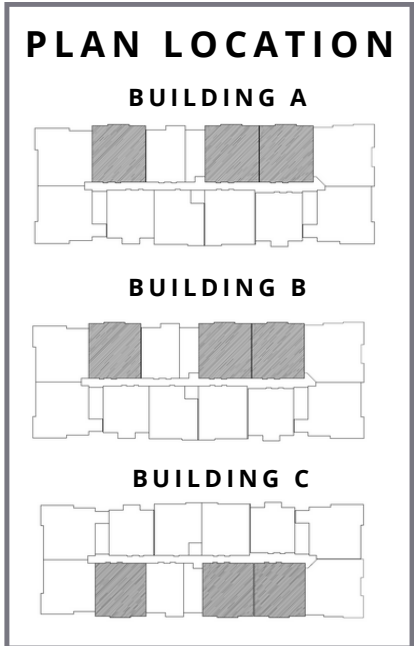
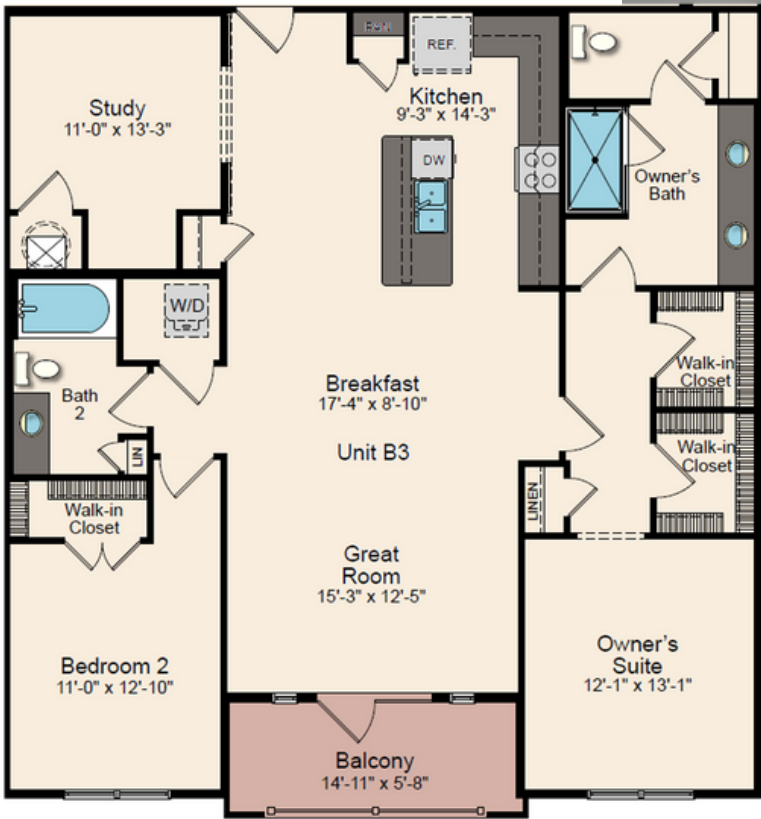


WWW.ELEMENTATMILLCREEK.COM



*Community information, plans, pricing and amenity details and dimensions are approximate and subject to change. Illustrations are artist concepts and may vary from the actual product being built. Builder specifications are subject to revision or substitution of equivalent materials without notice. We reserve the right to substitute equipment, material, appliances, and brand names with items of equal or higher, in our sole opinion, value. Contact the community manager for the latest information. Maryland Home Builder Registration No. Christopher Management, Inc #9101, Christopher at Element at Mill Creek LLC #9169.

"B3" FLOORPLAN



1,558 SQ. FT.
2 BED | 2 BATHS

CONTACT US

SALES TRAILER LOCATION:
74 OLD MILL BOTTOM RD N
ANNAPOLIS, MD 21409

E-mail: info@elementatmillcreek.com
Phone: 703.402.0300

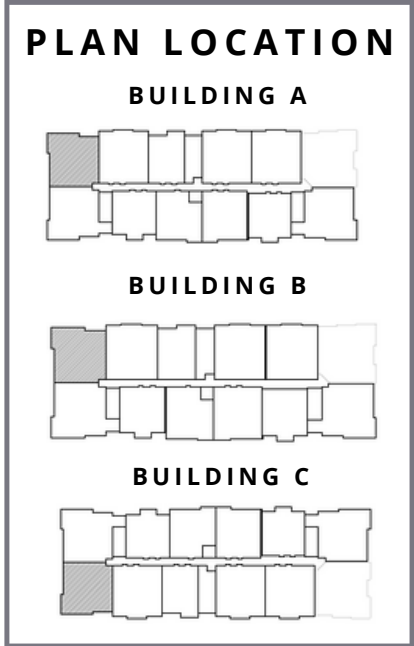
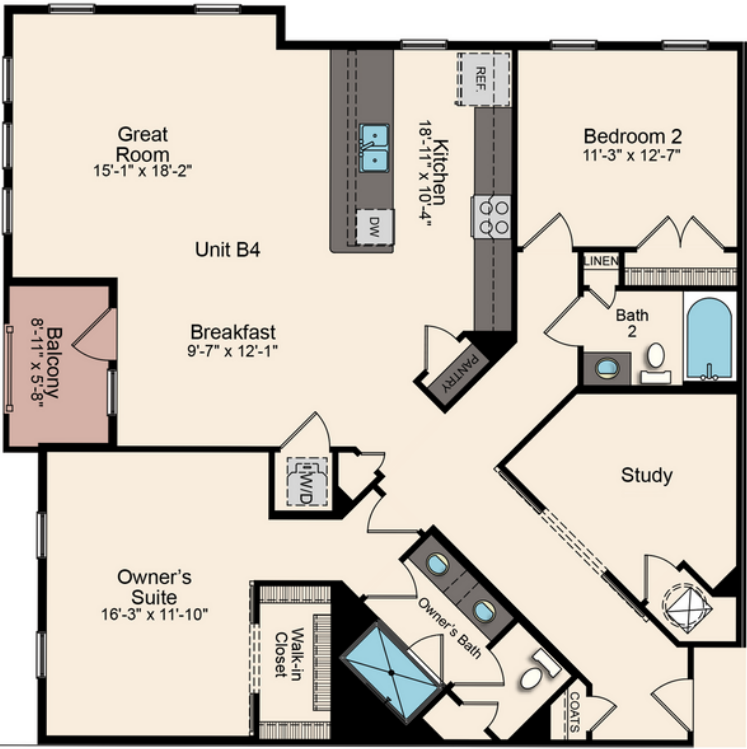


WWW.ELEMENTATMILLCREEK.COM



*Community information, plans, pricing and amenity details and dimensions are approximate and subject to change. Illustrations are artist concepts and may vary from the actual product being built. Builder specifications are subject to revision or substitution of equivalent materials without notice. We reserve the right to substitute equipment, material, appliances, and brand names with items of equal or higher, in our sole opinion, value. Contact the community manager for the latest information. Maryland Home Builder Registration No. Christopher Management, Inc #9101, Christopher at Element at Mill Creek LLC #9169.

"B4" FLOORPLAN



1,621 SQ. FT.
2 BED | 2 BATHS

CONTACT US

SALES TRAILER LOCATION:
74 OLD MILL BOTTOM RD N
ANNAPOLIS, MD 21409

E-mail: info@elementatmillcreek.com
Phone: 703.402.0300

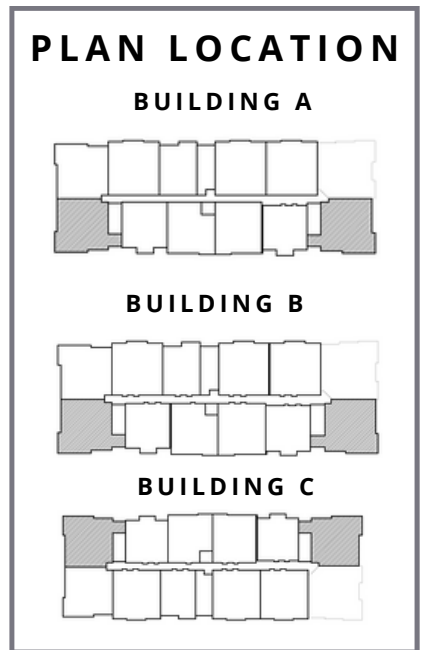
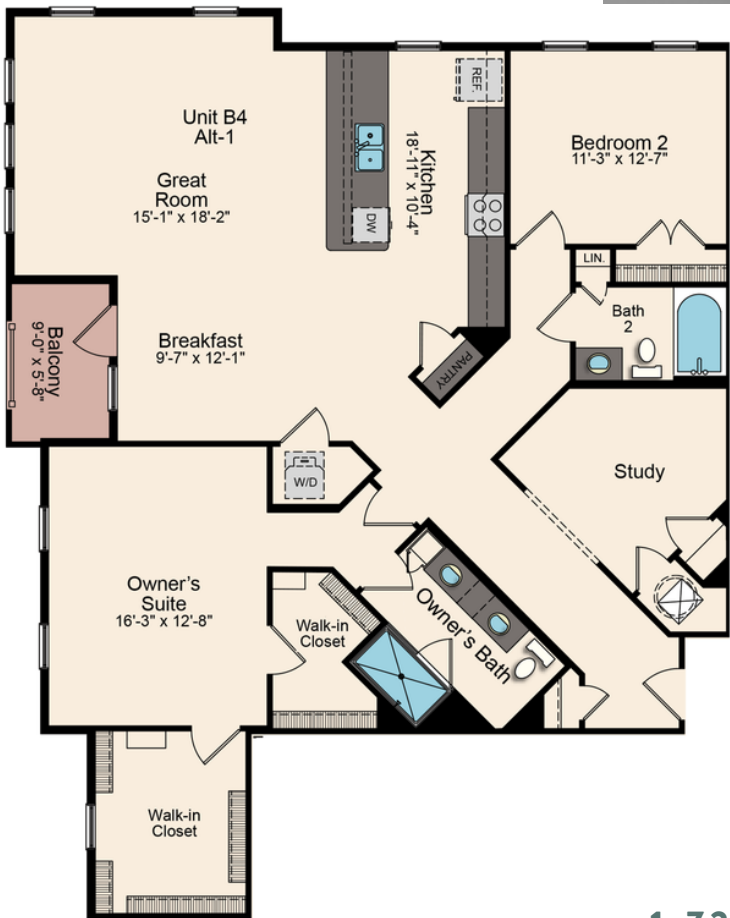


WWW.ELEMENTATMILLCREEK.COM



*Community information, plans, pricing and amenity details and dimensions are approximate and subject to change. Illustrations are artist concepts and may vary from the actual product being built. Builder specifications are subject to revision or substitution of equivalent materials without notice. We reserve the right to substitute equipment, material, appliances, and brand names with items of equal or higher, in our sole opinion, value. Contact the community manager for the latest information. Maryland Home Builder Registration No. Christopher Management, Inc #9101, Christopher at Element at Mill Creek LLC #9169.

"B4 - ALT 1" FLOORPLAN



1,723 SQ. FT.
2 BED | 2 BATHS

CONTACT US

SALES TRAILER LOCATION:
 74 OLD MILL BOTTOM RD N
 ANNAPOLIS, MD 21409

E-mail: info@elementatmillcreek.com
Phone: 703.402.0300



WWW.ELEMENTATMILLCREEK.COM



*Community information, plans, pricing and amenity details and dimensions are approximate and subject to change. Illustrations are artist concepts and may vary from the actual product being built. Builder specifications are subject to revision or substitution of equivalent materials without notice. We reserve the right to substitute equipment, material, appliances, and brand names with items of equal or higher, in our sole opinion, value. Contact the community manager for the latest information. Maryland Home Builder Registration No. Christopher Management, Inc #9101, Christopher at Element at Mill Creek LLC #9169.